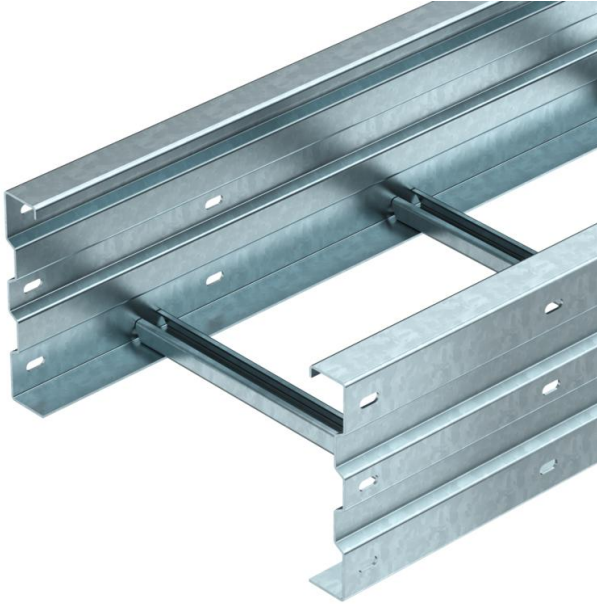


Technical data sheet

WKL 200 FT wide span cable ladder

Item number: 6232106



Wide span cable ladder with 200 mm side height.
Straight connectors of type WRVL 200 should be ordered separately and in the appropriate quantity.
Magnetic shield insulation without cover 10 dB, with cover 15 dB.



St

Steel

FT

Hot-dip galvanised

Master data

Item number	6232106
Type	WKL 2040 FT
Description 1	Wide span cable ladder
Manufacturer	OBO
Dimension	200x400x6000
Material	Steel
Surface	Hot-dip galvanised
Surface standard	DIN EN ISO 1461
Smallest sales unit	6
Unit of quantity	Metre
Weight	1398.34 kg
Weight unit	kg/100 m

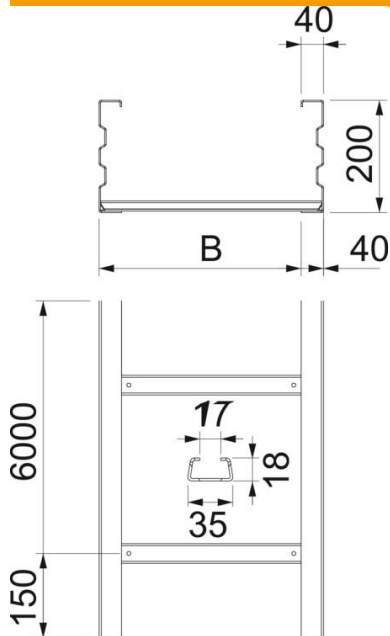
Technical data sheet

WKL 200 FT wide span cable ladder

Item number: 6232106



Dimensions



Dimension	200x400
Length	6,000 mm
Length	6,000 ft
Width	400 mm
Height	200 mm
Dimension B	400 mm
Dimension L	6,000 mm
Rung slot dimension	17.00

Technical data

Version of the rungs	Profile unperforated
Maintain electrical functions	no
Usable cross-section	704 cm ²
Usable cross-section	70400 mm ²
Rustproof steel, pickled	no
Side perforation	yes
Wide-span version	yes
Rail thickness	2.5 mm

Technical data sheet

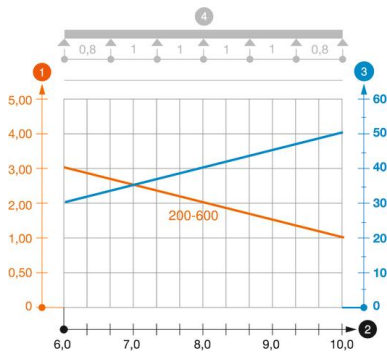
WKL 200 FT wide span cable ladder

Item number: 6232106



Loads

Insertable support spacings, min.	6 m
Insertable support spacings, max.	10 m
Support spacing 6.0 m	3 kN/m
Support spacing 7.0 m	2.5 kN/m
Support spacing 8.0 m	2 kN/m
Support spacing 9.0 m	1.4 kN/m
Support spacing 10.0 m	1.4 kN/m



Load diagram, wide span cable ladder, type WKL 200

- 1 Permitted cable tray/ladder load in kN/m without man load
- 2 Support width in m
- 3 Rail bend in mm at permitted kN/m
- 4 Load scheme during testing
- Load curve with cable tray/ladder width in mm
- Strut bend curve according to support width