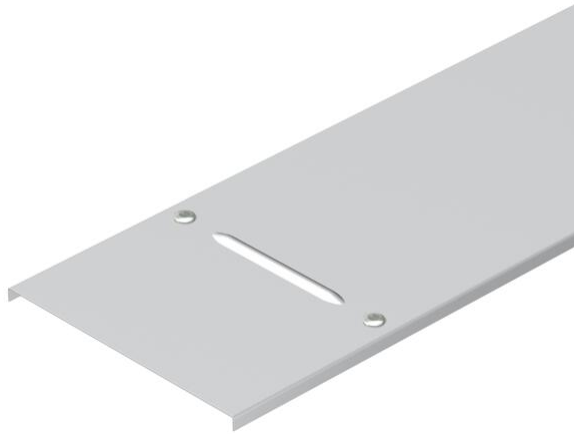


Technical data sheet

Cover with turn buckle WDRL 1116 30 A4

Item number: 6227363



Cover for wide span trays and ladders with the side height 110 and 160 mm.
Cross beading from 500 mm width.

If a turn buckle is installed at a later time, the following dimensions of the drill hole arrangement should be maintained.



A4 Stainless steel

2B Bright, treated

Master data

Item number	6227363
Type	WDRL 1116 30 A4
Description 1	Cover with turn buckle
Description 2	wide span system 110 and 160
Manufacturer	OBO
Dimension	300x3000
Material	Stainless steel
Surface	Bright, treated
Surface standard	
Smallest sales unit	6
Unit of quantity	Metre
Weight	265.334 kg
Weight unit	kg/100 m

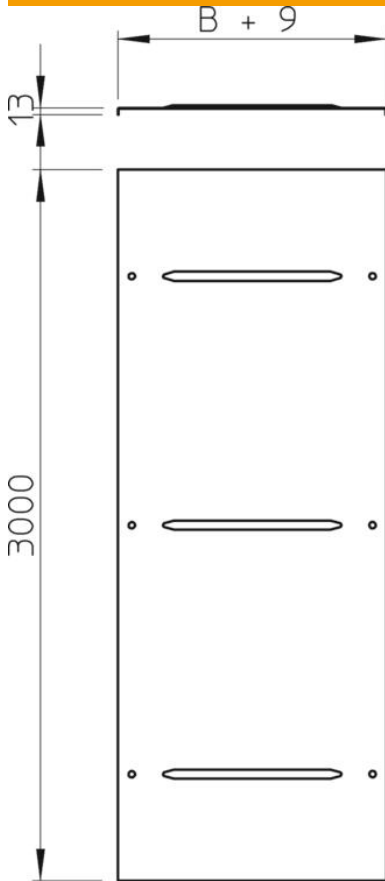
Technical data sheet

Cover with turn buckle WDRL 1116 30 A4

Item number: 6227363



Dimensions



Length	3,000 mm
Width	300 mm
Height	13 mm
Plate thickness	1.5 mm
Dimension B	300 mm
Dimension H	15 mm
Dimension L	3,000 mm

Technical data

Number of turn buckles	6 St.
Fastening type	Sash lock
Maintain electrical functions	no
Suitable for mesh cable tray	no
Suitable for cable ladder	yes
Suitable for cable tray	yes
Rustproof steel, pickled	no