

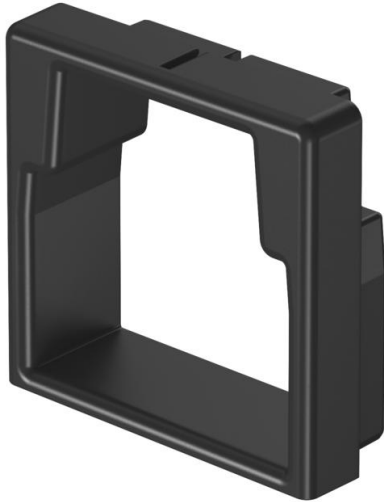
# Technical data sheet

Edge protection ring KSR 30030, for LKM cable duct type 30030

Item number: 6249746



Edge protection ring for the open ends of LKM cable trunking.



**TPE** Thermoplastic elastomer

## Master data

Item number	6249746
Type	LKM KSR30030
Description 1	Edge protection ring
Manufacturer	OBO
Dimension	30x30mm
Colour	Graphite black; RAL 9011
Material	Thermoplastic elastomer
Smallest sales unit	5
Unit of quantity	Piece
Weight	0.3 kg
Weight unit	kg/100 pc.

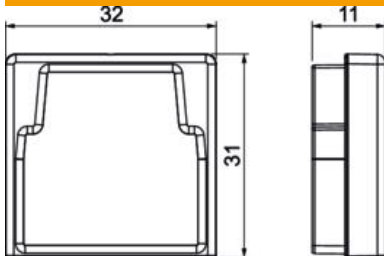
# Technical data sheet

Edge protection ring KSR 30030, for LKM cable duct type 30030

Item number: 6249746



## Dimensions



Length	11 mm
Width	32 mm
Height	31 mm

## Technical data

Type	Injection-moulded part
Suitable for	Cable routing duct
Halogen-free	yes